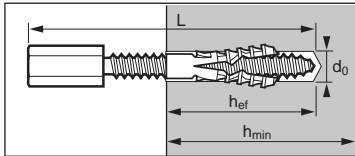


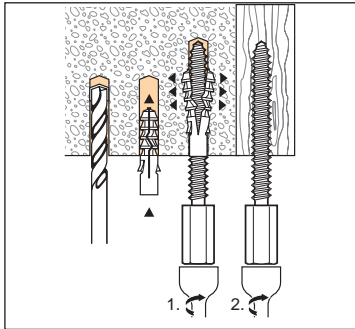
SPIT RM6



APPLICATION

- Suspended ceiling,
- Lights,
- Studs.

INSTALLATION



- On concrete and masonry: drilling $\varnothing 8$, put the NYL anchor in the hole, and install the RM6 anchor with the setting tool,
- On wood, screw it directly with the setting tool.

Female anchor with torque controlled expansion

Technical data

TYPE	Anchorage depth (mm) h_{ef}	Min. thickness of base material (mm) h_{min}	Drilling diameter (mm) d_o	Drilling depth (mm) h_o	Total anchor length (mm) L	CODE
RM 6	40	70	8	45	68	050054

Anchors mechanical properties

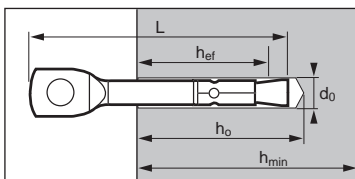
f_{uk} (N/mm ²) min. tensile strength	450
f_{yk} (N/mm ²) Yield strength	400

Recommended and failure loads (kN)

TENSILE	TYPE	h_{ef}	Concrete				Clay brick BP 400		Hollow clay brick C 40		Wood	
			C 20/25		C 30/37		N_{rec}	$N_{u,m}$	N_{rec}^*	$N_{u,m}^*$	N_{rec}^*	$N_{u,m}^*$
			N_{rec}	$N_{u,m}$	N_{rec}	$N_{u,m}$						
	RM 6	40	0,8	4,0	0,80	4,0	0,80	4,0	0,35	2,0	0,50	2,0

Using SPIT NYL 8 for RM6 in concrete and brick. Concrete rendered (max 5 mm): recommended load reduced to 50%

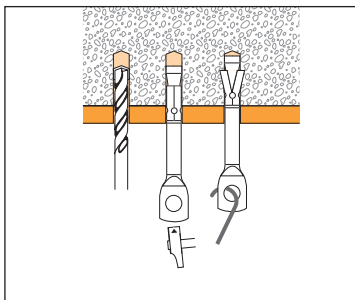
SPIT P6



APPLICATION

- Suspended ceiling,
- Light.

INSTALLATION



- Drilling $\varnothing 6$, depth 35 mm and insert the anchor with hammer.
- By hand locking before to hang the suspended system.

Wirehanger

Technical data

TYPE	Anchorage depth (mm) h_{ef}	Min. thickness of base material (mm) h_{min}	Drilling diameter (mm) d_o	Drilling depth (mm) h_o	Total anchor length (mm) L	CODE
P6	25	50	6	35	64	056100

Anchors mechanical properties

f_{uk} (N/mm ²) min. tensile strength	450
f_{yk} (N/mm ²) Yield strength	400

Recommended loads (kN)

TENSILE AND OBLIQUE	TYPE	h_{ef}	Concrete					
			C 20/25		C 30/37		\geq C 40/50	
			N_{rec}	$N_{u,m}$	N_{rec}	$N_{u,m}$	N_{rec}	$N_{u,m}$
	P6	25	1,50	6,00	1,80	7,00	2,20	8,60

SHEAR	TYPE	h_{ef}	Concrete				
			V_{rec}	$V_{u,m}$	V_{rec}	$V_{u,m}$	
			P6	25	1,40	5,60	1,70

Concrete rendered (max 5 mm): recommended load reduced to 50%

Fire behaviour

Characteristic resistance* (kN)	Exposure time	
	60 min	120 min
P6	0,085	0,045

*Values calculated according to the technical report TR 020 published by EOTA "Evaluation of anchorages in concrete concerning resistance to fire".

