



Tapcon Stud

For fast installation of pipe clamps and pre-assembled supports



Shark's teeth thread*

The unique thread reduces torque required to set anchor and also provides a more substantial anchorage once set.

The wider thread angle provides more mechanical interlock with the substrate.

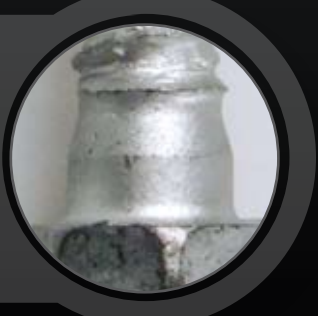
The low pitch of thread provides better resistance to cyclic loading.

*ITW Patented Technology.



Maximised collar shape

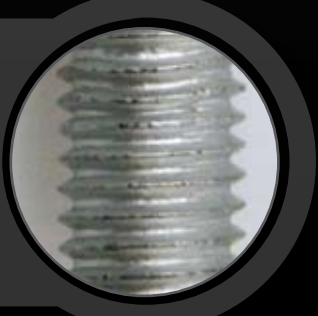
Increases shear and torque loading resistance.



Sinuloc® wave thread*

Locks on clamp / coupler to prevent accidental unscrewing due to vibration.

*ITW Patented Technology.



With its patented Sinuloc® Wave Thread, the Tapcon Stud is ideal for the fast attachment of pipe clamps, which can be screwed directly onto the fixing.

Product Advantages

6mm drill diameter (screw dia 7.5mm)
Smaller drill hole than other M8 anchors.

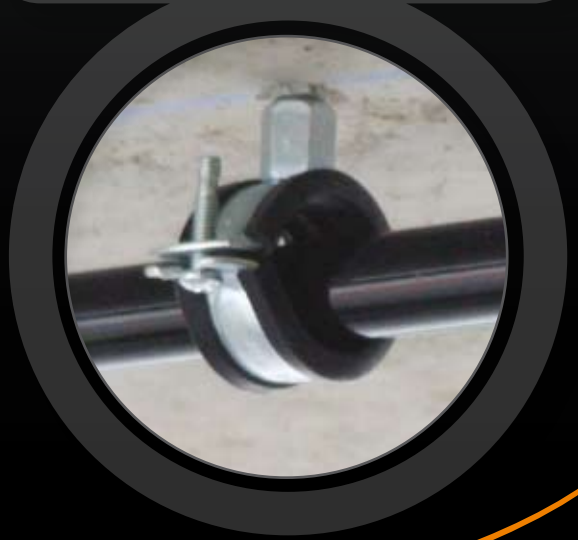
M8 thread
15mm long to engage M8 or combined M8/M10 clamps.

Shorter 35mm length version
Designed to minimise risk of hitting re-bar. 55mm version also available for higher loads.

Anchor is set as it is inserted
Saves time and reduces risk of incorrect setting.

Delta Protekt Coating
600 hours neutral salt spray.

Install with IWI280 Impact Wrench and 10mm Impact Socket
For the fastest, surest serial fixing of pipe clamps and pre-assembled supports.



www.itwcp.co.uk

Freephone Orderline: 0800 833 381

Freephone Technical Helpline: 0800 731 4924





DRILL

Spit 328 24V Hammer Drill
Code: 054113



SDS+ Hex Bit 6x180mm
Code: 920940



DRIVE

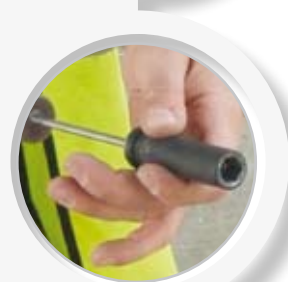
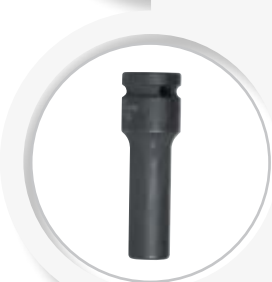
IWI280 Impact Wrench
Code: 054200



Torque Limiter
Code: 016704



10mm Impact Socket
Code: 016707



| Eurocode | Description | Anchor Ø mm | Drill Ø mm | Min Hole Depth mm | Screw Length mm | Max Fix Thickness mm | Thread Ø | Hex Socket Size mm | Box Qty | List Price £ | List Price € |
|----------|---------------------|----------------|---------------|-------------------------|-----------------------|----------------------------|-------------|--------------------------|------------|-----------------|-----------------|
| 016652 | M8 Tapcon Stud 35mm | 7.5 | 6 | 43 | 35 | 2 | M8 | 10 | 100 | 36.11 | 52.72 |
| 016653* | M8 Tapcon Stud 55mm | 7.5 | 6 | 63 | 55 | 22 | M8 | 10 | 100 | 43.20 | 63.07 |

*Order to order only